



# NEWSFLASH

Spring Edition 2026

Issue 91

Registered Charity 1088249



A BIG THANK YOU to all our helpers and volunteers for their continued help and support



# COME AND LEARN SOME NEW SIGNS WITH MARY!

Saturday 21st March 2026

Saturday 16th May 2026

Saturday 18th July 2026

2:45pm to 3:45pm

Group Signing Session

Aylesbury Youthspace

# Welcome to the YDA Newsflash!

Young Deaf Activities (YDA) is focused on young people of all ages who are deaf and deafblind\* who live or enjoy activities in Buckinghamshire.

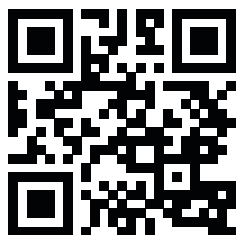
Our aim is to bring young deaf and deafblind\* members together to have fun by arranging Saturday Youth Clubs, monthly Parent Support Groups, holiday events and other activities. We also offer families with deaf and deafblind\* children British Sign Language Lessons and communication support within the home. Our organisers, staff and volunteers are either D/deaf\*\* themselves or have considerable experience with the deaf community.

YDA has been established since 1994 and was registered as a charity in 2001.

*\*all levels of hearing loss, hearing impairment and dual sensory loss.*

*\*\*D/deaf: When the word 'deaf' is written with a lowercase d, it usually refers to the audiological experience of deafness. This means someone who is not able to hear as well as someone with normal hearing. The National Deaf Children's Society uses the word 'deaf' to refer to any level of hearing loss.*

*When the word 'Deaf' is written with a capital D, it refers to the cultural experience of deafness. When someone identifies as Deaf, they identify as a member of the Deaf community and share a sense of Deaf culture with other members of the Deaf community. Most people who identify as Deaf use sign language.*



Website: [www.yda.org.uk](http://www.yda.org.uk)

Search **Young Deaf Activites** on Facebook

## Contents

Spring Edition 2026

Issue 91

Youth Club Dates	7
Parent Support Group Dates	8
Parent Support Group Trips	10 to 11
Home Communication Club	14
BSL Access Information Bucks	18
Easter Holiday Activities	19
YDA Trips	20 to 21
NDCS	22
Donations and Support	23

## Contact Information

### Youth Club Manager

Mary Fallon

Mobile: 07472 179016 (text only)

Email: [mary@yda.org.uk](mailto:mary@yda.org.uk)

### Home Communication Club and Parent Support Group Manager

Jade Costello

Mobile: 07966 362683

Email: [jade@yda.org.uk](mailto:jade@yda.org.uk)

### Fundraiser

Jenny Freeman Wood

Mobile: 07963 482553

### Website Editor

Anzhel Stefanov

Mobile: 07551 832474 (text only)

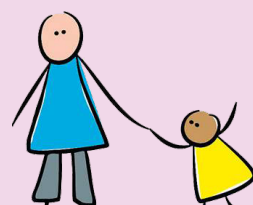
Email: [ydanewsflash@gmail.com](mailto:ydanewsflash@gmail.com)

### Newsflash Editor

Lorenzo Pio Di Zenobbia

Mobile: 07518 204041 (text only)

Email: [ydanewsflash@gmail.com](mailto:ydanewsflash@gmail.com)



# News!



Sadie achieved her 10 metre swimming medal! Mummy and Daddy are very proud of Sadie's achievement given how challenging it is to swim without her hearing aids. Mummy and Daddy's little star! PSG are very proud of you too, Sadie.



Look how much our PSG members' bulbs have grown! Well done Sadie, Theo, Milo and Willow! Thank you Alison and William for leading the planting session.



## George is getting his first hearing aid!

Learn more about childhood deafness, including ways to support deaf children like George.



LOVE NEVER PLAYS BY THE RULES



# BRIDGERTON

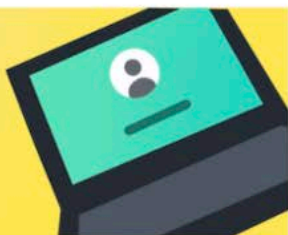
We're proud to celebrate Jude Powell seen as Lord Allison in Bridgerton. Jude is a deaf actor (and YDA member) who communicates in BSL. He brings intelligence, elegance, and a strong commanding screen presence to one of the world's most iconic period dramas.

Text taken from Aston Management

# YDA Tips



**SIGN UP**



**TEACHER  
LOGIN**



**STUDENT  
LOGIN**



Welcome to **The School of Signs**, bringing British Sign Language to primary school classrooms across the UK.

This fully-fledged programme of study aims to provide every teacher with everything they need to teach BSL, in one place. This includes **15 complete video lessons**, led by **expert BSL teachers** at the Royal Association for Deaf People, as well as all the printable and online resources to support them.

Everything can be accessed through our simple online platform which allows schools to track learners' progress, set homework, and even play BSL games.

Find out more about **The School of Signs** in the video below, or **sign up now** and get started delivering BSL lessons straight away.



The school of Signs is a new initiative bringing BSL to classrooms across the UK at no cost. Scan the QR code to find out more about it and you can sign up your children's schools to receive it.

# Youth Club Dates

Entrance and refreshments. £4 Per Person

Youth Club meets twice monthly welcoming deaf, deafblind\* children and their siblings over age 5 including those with additional needs to enjoy an array of organised activities by our Deaf\*\* Youth Worker. Youth Club provides an opportunity for our members to meet other deaf and deafblind peers to enable effective communication with their siblings and exposure to positive Deaf role models.

\*deaf and deafblind refers to all levels of hearing loss, hearing impairment and dual sensory loss.

\*\*We use Deaf with a capital D to refer to people who have been deaf all their lives, or since before they started to learn to talk. They are pre-lingually deaf and are part of a cultural community.



Green Street, High Wycombe, HP11 2RA

Wendover Way, Aylesbury, HP21 7NH

Please note Green Street Youth Club has parking available.

We are located behind The Grange School. Please note Youth Club has parking available.

**2pm - 4pm**

**2:30pm - 4:30pm**

**No Club in April**

2nd May 2026

6th June 2026

4th July 2026

**No Club in August**

5th September 2026

21st March 2026

**No Club in April**

16th May 2026

20th June 2026

18th July 2026

**No Club in August**

19th September 2026



Please text Mary (07472 179016) the Saturday before Youth Club if you need to use the minibus.

Email: [mary@yda.org.uk](mailto:mary@yda.org.uk)

# Parent Support Group

Entrance and refreshments. £4 Per Family

If you have a deaf or deafblind\* child aged 5 years or under we would love to meet you. Our aim is to empower and support families to make informed choices. We aim to offer support and advice to families, covering a wide range of topics and issues linked with deafness and deafblindness. Come to YDA's Parent Support Group to meet other parents and children, share experiences and guide us on topics you want access to.

*\*deaf and deafblind refers to all levels of hearing loss, hearing impairment and dual sensory loss.*



Wycombe Road, Princes Risborough,  
Aylesbury, HP27 0DH

We are located behind the church through the white door.

Please note PSG do not have any parking.

**10:30am - 1:30pm**

21st March 2026

**No PSG in April**

16th May 2026

20th June 2026

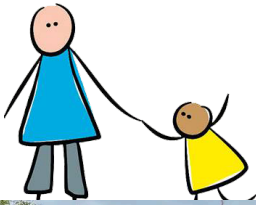
18th July 2026

**No PSG in August**

19th September 2026

Please text Jade (**07966 362683**) the Saturday before if you are interested in joining us!





## Sunday Meet Ups

We are very excited to announce that we will be hosting our Sunday twice yearly meet ups at Waddesdon Manor. Come and join us for a chat, cuppa and cake!

Dates: **Sunday 10th May and 15th November 2026**  
Time: 10:30-1:30

Current and past families welcome.  
Please let Jade know if you'd like to attend.



## Waddesdon Manor

Join PSG for their Easter and Summer Trip to Waddesdon.

This French Renaissance-style chateau with its world-class collection and beautiful gardens and grounds has something for the whole family to enjoy.

### Easter trip - Easter Egg Hunt

When: **Saturday 28th March**

Time: 10:30am - 1:30pm

### Summer trip

When: **Saturday 8th August**

Time: 10:30am - 1:30pm

Where: Waddesdon

Address: Waddesdon, Aylesbury HP18 0JH

Numbers are limited.

Current and past families welcome.  
Please let Jade know if you'd like to attend.





## Thomley Hall (Worminghall)

Thomley is a place for people of all abilities and disabilities. We provide an exciting site for disabled people, their families, carers and friends. We support people at any stage of their diagnostic journey, whatever their additional needs.

When: **Saturday 25th July**  
Time: 10am - 3pm  
Where: Thomley  
Address: Menmarsh Road, Worminghall, HP18 9JZ

Current and previous members very welcome to join us.

Please contact Jade for more details on how to book. Places are limited so please do make contact promptly if you wish to attend.

**Deadline to let Jade know if you're interested in attending: Saturday 28th March**



# Xmas 2025



"We absolutely loved the Christmas party. Thank you for all your hard work to make such a lovely and welcoming group."

# Chickenshed 2025



## PSG Feedback:

“We had such a lovely time at the chickenshed performance, and especially the opportunity to see behind the scenes beforehand and meeting the cast after. The children learnt a lot from the tour and had the opportunity to touch the props, try on some of the costumes, sit on Grandma’s chair, and on the train.”

“It was lovely to come to Chickenshed Theatre. We thoroughly enjoyed it. Thank you for organising.”

“Such an amazing experience! Unlike any theatre that we’ve been to before! The children enjoyed it immensely. We’d love to go again!”

# Home Communication Club

**Home Communication Club (HCC)** offers families with deaf and deafblind\* children **British Sign Language Lessons and communication support** within the home.

Curriculum covered is family based to meet the needs of your child. HCC are flexible with what is taught, we meet at a time that suits you and the sessions are not limited to immediate family members only. We would love to see Nanny, Grandad, neighbours and whoever plays an important part in your child's life involved in the lessons. HCC provides 10 initial one hour free sessions. Further sessions can be requested, however a donation may be asked depending on your situation.

*\*deaf and deafblind refers to all levels of hearing loss, hearing impairment and dual sensory loss.*

If you are interested in taking advantage of HCC please contact: Jade Costello (**07966 362683**)



## Feedback:

“We have been very happy with the signing lessons we have received.”

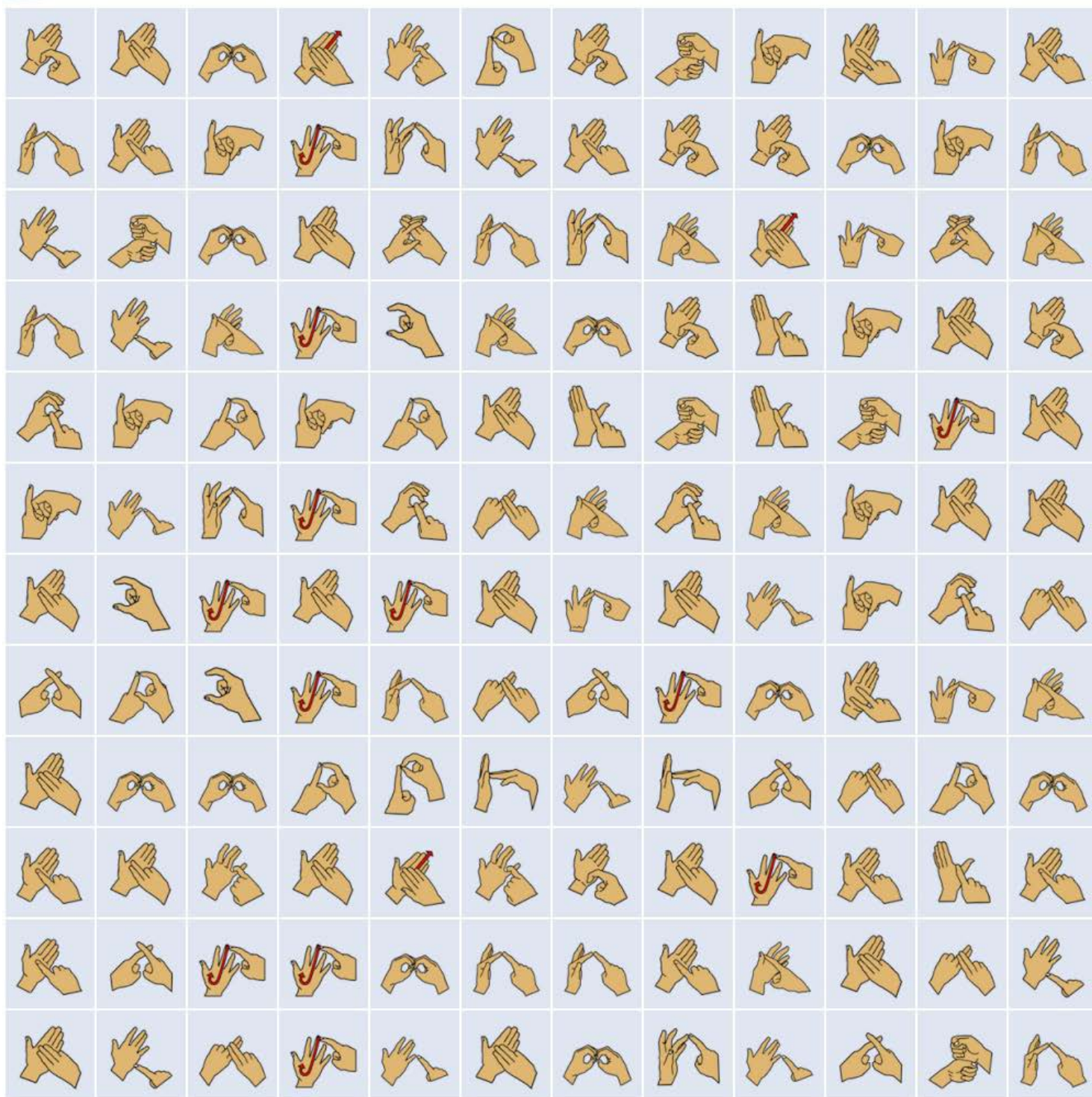
“HCC have made a huge difference to our family and I can see a big improvement in V's signing. We are able to communicate with each other at home in basic signing and it's given us a foundation to build on”

“We would absolutely recommend Home Communication Club to other families”

“We feel very lucky to have had the opportunity to have HCC lessons. The resources for learning sign language seem very limited and we have been told that it's always better to learn from a member of the deaf community. V, who is 15 now feels she wants to integrate more into the deaf community. She goes to a mainstream school where no one signs and it has been difficult for her to access the curriculum due to her hearing loss. This has made her aware that having sign language as an extra layer of communication can play an important role for her. Thank you so much for the opportunity to learn.”

# YDA BSL WORD SEARCH

BSL Fingerspelling

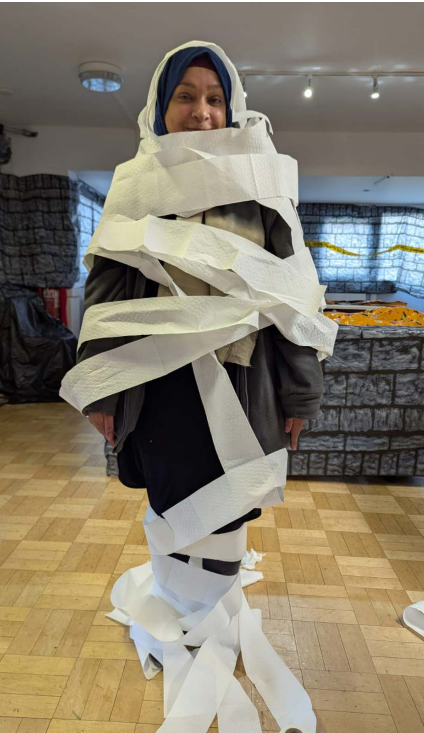
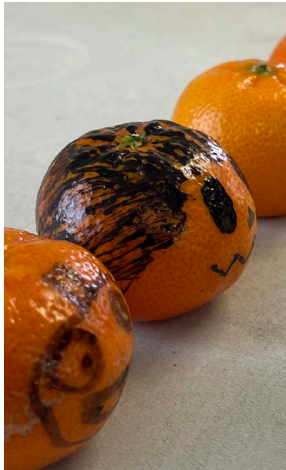


## WORDS

-- PLAY -- STORY -- GAME -- FUN -- LEARN --

Create your own BSL fingerspelling word search puzzles online at  
[www.signlanguageforum.com/bsl/](http://www.signlanguageforum.com/bsl/)

# Halloween



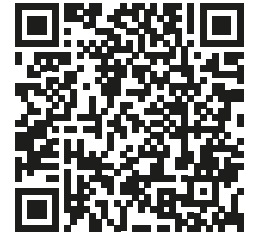
Lots of fantastic Halloween costumes  
Yasmena wrapped in tissues as an Egyptian mummy.

# Christmas

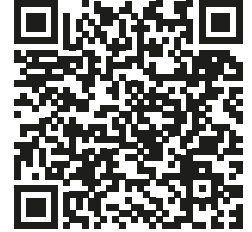


Lots of fun at the Christmas party and an amazing Santa can sign!

- ▶ Deaf Cafe / Pubs
- ▶ Bucks Information in BSL
- ▶ BSL Events
- ▶ Interpreted Events
- ▶ Interpreted Theatre
- ▶ And much more! .....



Facebook



Instagram



Tiktok

**March**

**Church**

1st BSL Signed Church The Cross & Stables, MK14 7RZ 11am

**Deaf Club**

3rd & 17th Aylesbury Deaf Coffee Morning, Methodist Church 11am

**Theatre**

Chitty Chitty Bang Bang - Chesham Elgiva 7:30pm - BSL Interpreted  
Inspector Morse - Milton Keynes Theatre - 7:30pm Captioned

**Outdoor / Online Events**

28th Hands Talking Zoom - BSL Signed Song -11am

**Deaf Pub / Cafe / HoH Group**

5th Winslow Hard of Hearing Club - Library 2:30pm to 4pm	14th Beaconsfield Signing Café The Dove Café, HP9 1UF 1pm	11th & 25th Aylesbury Deaf Pub - Bucks Yeoman . 7:30pm
17th Weston Turville Signing Pub - Chandos Arms - 7pm	21th MK Coffee Club - John Lewis Place to Eat - 11am - 2pm	21th Hughenden Deaf Cafe - Hughenden Garden Village - H/W HP13 5GA 1pm
	28th Aylesbury Signing Café - Starbucks (Gatehouse Road) 1pm	

**April**

**Church**

5th BSL Signed Church The Cross & Stables, MK14 7RZ 11am

**Deaf Club**

7th & 21th Aylesbury Deaf Coffee Morning, Methodist Church 11am

**Outdoor / Online Events**

25th Hands Talking Zoom BSL Signed Song -11am

**Deaf Pub / Cafe / HoH Group**

2nd Winslow Hard of Hearing Club - Library 2:30pm to 4pm	11th Beaconsfield Signing Café The Dove Café, HP9 1UF 1pm	8th & 22nd Aylesbury Deaf Pub - Bucks Yeoman . 7:30pm
21th Weston Turville Signing Pub - Chandos Arms - 7pm	18th MK Coffee Club - John Lewis Place to Eat - 11am - 2pm	18th Hughenden Deaf Cafe - Hughenden Garden Village - H/W HP13 5GA 1pm
	25th Aylesbury Signing Café - Starbucks (Gatehouse Road) - 1pm	

**Theatre**

9th Miss Saigon - Milton Keynes Theatre 7:30pm - Captioned

**New for 2026**

## Hughenden Deaf Café

**3rd Saturday Every Month\***  
**1-3pm in the Bistro**

**Come and see the home of 'Old Hands, New Tricks**

**\*17 Jan, 14 Feb, 21 Mar 26**

**Hughenden Gardens Village, High Wycombe, HP13 5GA**

**ExtraCare**  
Charitable Trust

# Easter Holidays Activities



When: Monday 30th March and Tuesday 7th April 2026  
Time: 10:00am - 3.00pm  
Where: Aylesbury Youthspace  
Address: Wendover Way, Aylesbury, HP21 7NH  
(We are located behind the School. Please note Youth Club have parking available)

Bring a packed lunch and drink.

YDA Member: £8.00 per person

Please return the booking slip below, attached with cheque/cash (please ensure right amount) - payable to YDA to Mary Fallon either at Green Street or Aylesbury Youth Space.

Please book now.

**DEADLINE: FRIDAY 20th MARCH 2026**



Name: .....

Monday 30th March: .....

Tuesday 7th April: .....

Total: .....



## Gravity Active Milton Keynes Xscape

Welcome to Gravity Active Milton Keynes in Xscape — where bouncing, climbing and laughter, leap into Open Jump, tackle the Gravity Rocks climbing walls, dunk hoops, dodge through foam pits, Gravity Active Milton Keynes is where memories are made and energy runs wild.

- When: **Thursday 2nd April 2026**
- Time: Wycombe Abbey School at 9.15am  
Aylesbury Youth Club at 10am
- Return: Aylesbury Youth Club at 4pm / 4.15pm  
Wycombe Abbey School at 4.45pm / 5pm

Bring a packed lunch and drink, or bring money to purchase food on-site.

Cost: £20 per child (includes transportation and entry) **GRAVITY GRIP SOCKS £3.60**

Please return the booking slip below, attached with cheque/cash (please ensure right amount) - payable to YDA to Mary Fallon either at Green Street or Aylesbury Youth Space.

Please book now.

**DEADLINE: FRIDAY 20th MARCH 2026. NO BOOKINGS AFTER 20th MARCH 2026!**

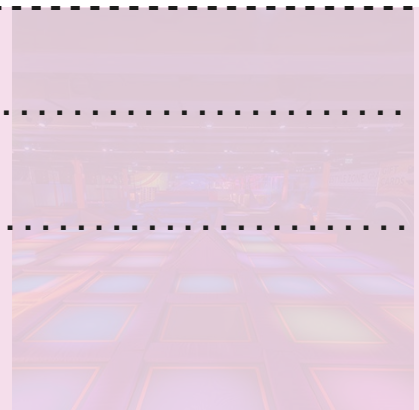


Member's name: .....

Email: .....

Number of tickets: (£20) .....

Under 18s Member



Over 18s Members



## Flight Club Dart - London Victoria

We are back! Lot of fun of the fairground, in a stunning setting with 18 oche-es (darts playing areas)

When: **Thursday 9th April 2026**  
Where: High Wycombe Railway Station at 9.30am

Cost: £17.00 (for 90 minutes)

Please return the booking slip below, attached with cheque/cash (please ensure right amount) - payable to YDA to Mary Fallon either at Green Street or Aylesbury Youth Space.

Please book now.

**DEADLINE: FRIDAY 20th MARCH 2026. NO BOOKINGS AFTER 20th MARCH 2026!**



Member's name: .....

Email: .....

Number of tickets: (£17.00) .....  
Over 18s Member



# Supporting Families and Celebrating Community: My Recent Visits to PSG and Youth Club - By Lisa Goss

Over the past few months, I've had the pleasure of meeting several wonderful families who have recently joined our Home Communications Club. Each family brings their own experiences, questions, and hopes as they navigate life with a deaf child, and it's been a privilege to support them in their journey.

A big part of my role has been helping families access the right information and resources at the right time. Recently, I've supported parents by sharing:

- **Our swimming resource**, designed to help swimming teachers understand deaf awareness, including links to visual flashcards.
- **Local BSL course options**, for those wanting to begin or build on their signing skills.
- **Details of charities and organisations offering grants** that can make a real difference in accessing equipment or support services.
- **Apps and learning tools** to help support families learn BSL together.
- **Information about School of Sign**, and other early communication resources.
- **Local support groups**, helping families connect with others who share similar experiences.
- **Books featuring deaf characters**, which have been especially helpful for both young children and their siblings.
- Talking through how best to balance work, hospital appointments, and everyday family life.
- Guidance around local nurseries and schools, EHCP journeys, and practical tips like gluing moulds into tubing for little ones or understanding glue ear.

Every conversation has reminded me just how much strength, love, and resilience families bring to their children's journeys—and how important it is to walk alongside them with reassurance and practical help.

## Visits to PSG and Youth Club

It has been wonderful to see just how lively and busy both PSG and the youth club have become recently. Our Christmas parties were a real highlight—there was so much laughter, energy, and connection in the room. From games and highlight—there was so much laughter, energy, and connection in the room. From games and crafts to the excitement of Father Christmas, the children had a fantastic time. And of course, the adults signing "*The Twelve Days of Christmas*" together was a brilliant moment of shared joy (and teamwork!).

During youth club, Mary has been running a signing group that has quickly grown in popularity. It's been lovely to see so many parents and carers eager to join in, learn new signs, and build confidence in communicating with their children. These sessions have created a supportive space where families can learn together, ask questions, and celebrate progress.

## Looking Ahead

Being part of these groups and supporting families over the last few months has been incredibly rewarding. Each interaction—whether it's helping someone find the right BSL class or watching children take part in festive activities—reinforces the importance of connection, inclusion, and community.

I'm looking forward to meeting even more families in the coming months and continuing to support the amazing work of YDA. It's a privilege to be part of a community where everyone works together to ensure deaf children and their families feel informed, empowered, and celebrated.

## National Deaf Children's Society News

We have launched a grant programme in partnership with Family Fund to support families of deaf children through small grants- £500-£600. The grants will help families access:

- **assistive technology** specifically related to deafness or hearing loss
- **standard technology**, such as iPads or similar devices
- **support for learning British Sign Language (BSL)**, including course fees and related costs

To apply an application will need to be filled out directly through Family Fund, please see flyer for more details or please do ask me any further questions, I would be happy to help.

## BSL Drop In Sessions at Marlow Library

We're really excited to share that the NDCS has recently welcomed a new volunteer who has joined us as a Communication Support Worker. They will be helping to run a relaxed drop in BSL practice session at Marlow Library on Saturday mornings from 11:30am–12:30pm.

These sessions are open to all families—whether you are currently taking part in Home Communications Club, have completed it, or simply want a friendly space to practise your signing together. It's a lovely opportunity to build confidence, meet others, and use your BSL in a supportive, informal environment. I will confirm which Saturdays our volunteer will be attending, but please feel very welcome to come along any week. It's a great chance to practise with the family, meet other parents and carers, and keep developing your BSL skills.

# A GREAT BIG THANK YOU

**TO ALL THE WONDERFUL PEOPLE WHO HAVE MADE DONATIONS TO YDA OVER THE YEAR.**

**The Barrow Family**

**Bucks Badgers**

**Dunham's Family**

**Milo and Willow's Family**

**Princes Risborough Rotary Club Tesco**

**Waddesdon Manor - Community Partnership**

**William's Family**

**Wycombe Abbey School**

## **Donations and Support**

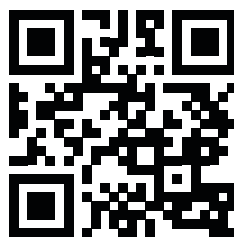
Young Deaf Activities receives no Central Government funding so relies heavily upon assistance from Local Authorities and the generosity of people like yourselves.

Thank you for anything you can give; it really is much appreciated and will help us to continue our good work with deaf or hard of hearing children and young people.

To donate please see our contacts: Jenny Freeman Wood (07963 482553)



Keep Safe and Remember  
you are not alone...



Website: [www.yda.org.uk](http://www.yda.org.uk)